

MAGIC LANTERN SOCIETY NOTICE BOARD

LOÏE FULLER IN FULL FLOW

Bill Barnes has sent this additional image (from Lester Smith's collection) discovered too late to illustrate his article on 'The Paris Exposition Universelle de 1900' (*TML* 13, p.10). It shows an artist's impression of a stage performance of Loïe Fuller's Serpentine Dance while twin lanterns, placed each side of the stage in the 'wings', project coloured lights on her flowing robes. He would also like to correct an error that appeared in the article – the Eiffel Tower was built for the 1889 Exposition, not 1899.



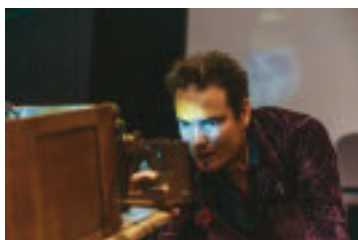
KENT MUSEUM OF THE MOVING IMAGE

Last summer many Magic Lantern Society members were lucky enough to enjoy a 'sneak preview' visit to Joss Marsh and David Francis' Museum of the Moving Image in Deal, Kent. The good news is that, after many years of hard work, the Museum is now officially open. You can visit from Friday to Sunday, 12pm to 6pm. *The Guardian* recently (29 May) published a well-illustrated article about it with Joss and David explaining their approach and aims – look out for more media coverage. Joss and David are also looking for enthusiastic volunteers to help at the Museum, so contact them if you are interested (joss@kentmomi.org). The address is 41 Stanhope Road, Deal, Kent, CT14 6AD, UK.



EREWHON AT THE EDINBURGH FRINGE

Kiwi playwright, newly-qualified magic lantern showman and MLS member Arthur Meek is taking a version of Samuel Butler's classic 1872 sci-fi satirical novel *Erewhon* to the Edinburgh Fringe this year, complete with biunial, iPhone 6 and a live musical score. This multimedia collaboration between Arthur and Edinburgh's Magnetic North Company tells of a Victorian explorer discovering a colony of 21st century time-travelling refugees escaping their dependence on modern technology. This delightful neo-historical head-scratcher playfully welds future, past and present into a glittering bracelet of time. The original musical score is played live by fellow Kiwi Eva Prowse. See Arthur from 1–26 August at the Cairns Lecture Theatre (1:45pm, one hour). More information: www.arthurmeek.com



BOOKS TO LOOK OUT FOR

Lester Smith has alerted us to two interesting books by Tony Fletcher that he bought recently: "The first is *Regulating the Cinematograph in London 1897–1906* and is full of information about and illustrations of all the music halls and theatres where the early 'cinematograph', 'bioscope' and 'living pictures' could be seen. Rather academic but lots of mentions and pictures of lanterns and slides. Published in 2017 by Local History Publications, 316 Green Lane, London, SW16 3AS, 180 pages, £15.

"The second is *The Salvation Army and the Cinematograph 1897–1929*. Again with many lanterns and slides – and by the same publisher (100 pages, £10). One important fact I gleaned from this book was that in 1892 a magic lantern, acquired from Professor Pepper (ex. Royal Polytechnic) was used to give a dissolving view programme about the social work of the Salvation Army to 2,000 people. The lanternist's name was not mentioned other than that he had travelled with David Livingstone into Africa.

"I am told that a third book by Tony Fletcher *A Kinematographic Journey Through London 1907–08* was published in 2014 (£15) but so far I haven't seen a copy."

Lester would also like to remind members to visit the Cinema Museum in Lambeth, London. This has an amazing archive of early projection equipment, books, posters and a magic lantern or two. The Museum is still under threat so take advantage of their very informative guided tours now (more information: www.cinemamuseum.org.uk).

MERVYN HEARD AUCTION

John Townsend let us know at the spring meeting (see also report on p.15) that most of Mervyn Heard's collection will be auctioned at SAS, Newbury, on Tuesday 17 July. More information: www.specialauctionservices.com

OVERHEARD AT THE SPRING MEETING

Alexia Lazou heard this snippet at our last meeting: "Herman Bollaert? He does a mean dissolve!" 'Mean' can have many meanings but no doubt here it meant 'very skilful or effective'. Know what I mean ...?

THE MAGIC LANTERN – FUTURE ISSUES

Why not contribute to *TML*? Our next edition will focus on women and the magic lantern (deadline, end August). Do you have an interesting angle on women and magic lanterns, either modern or from times gone by? Or favourite Christmas slides with the facts and tales behind them (December issue – deadline, start November)? What about the story of your first slide? Or a strange but true 'lanternist's tale'? Don't be shy, get in touch! (editor@magiclantern.org.uk)

DIARY DATES

Please take these dates as a guide only and confirm before travelling

2018

17 July

Auction of Mervyn Heard's collection
SAS, Newbury

28 July

Summer meeting of the Magic Lantern Society
Lacey Green Millennium Hall, Lacey Green, Bucks

1–26 August

Arthur Meek in *Erewhon*

Cairns Lecture Theatre, Edinburgh

4–6 September

Conference: *The Magic Lantern in Australia and the World*
Canberra, Australia

19–21 September

IPC Conference: *Memory and the Panorama*
Panorama 1453 History Museum, Istanbul, Turkey

20 October

Autumn meeting of the Magic Lantern Society
Birmingham and Midland Institute

13 November 2018

Second symposium, project *B-Magic*
Université Catholique de Louvain (UCL),
Mundaneum, Mons, Belgium

2019

26 January

Magic Lantern Society AGM
Musical Museum, Kew, London

NEW MEMBERS

David Coffeen Hastings on Hudson, NY, USA
Grace Wilson Boulder, Colorado, USA
Rupert Grobden Auckland, New Zealand