



*Ally Sloper goes hunting. Maker unknown, UK, no later than 1891 (sold by Wright & Co, Bootle) (Dick Moore)*

## THE FOUR SEASONS

*Season of mists and mellow fruitfulness,  
Close bosom-friend of the maturing sun;  
Conspiring with him how to load and bless  
With fruit the vines that round the thatch-eves run;  
To bend with apples the moss'd cottage-trees,  
And fill all fruit with ripeness to the core;  
John Keats (1795-1821), 'To Autumn'*

We move on to 'Autumn' in our series of images of the four seasons. For this season the favourite subject is the harvest coming home as the trees turn shades of gold and copper. However there is a strong hunting theme here, with Ally Sloper causing his usual chaos and two rather



*From a 'Four Seasons' set used in the Dickens Theatre in The Netherlands (see TML 35). No maker's name (Else Flim and Adrian Kok)*



'September. Michaelmas Day' (29 September) – the birds outwit the hunters. From a set of the 12 months of the year, W.C. Hughes, London (Martin Gilbert)

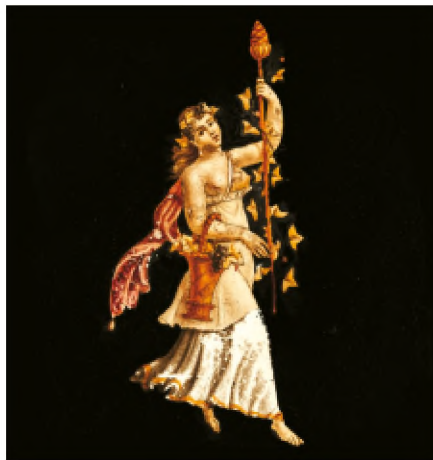
unsuccessful attempts depicted in Martin Gilbert's Hughes slides for September and October – at least the wildlife were safe. Ditmar Bollaert has sent another two slides from his father Herman's show (see also p. 15). The figure in the second image is probably Ceres, the Roman goddess of agriculture, grain crops and fertility, among other duties. Please keep sending images to [editor@magiclantern.org.uk](mailto:editor@magiclantern.org.uk), together with as much information as you have about the slides, such as maker, date, etc., or any story you have about the slides and how you showed them. It will soon be spring again!



'October. Hunting Days' – the perils of going hunting. From a set of the 12 months of the year, W.C. Hughes, London (Martin Gilbert)



Two more slides that were used in Herman Bollaert's *Laterna Magica Galantee Show*. There are no makers' names or labels on the slides (Ditmar Bollaert)



Gathering the harvest by the sea. W.F. Archer, Liverpool, around 1880 (Mary Ann Auckland)